

ICUSB2321F
ICUSB2322F
Instruction Manual

USB Serial Adapter

**1/2-Port USB to Serial RS232
Adapter Cable
with COM Retention**

StarTech.com
Hard-to-find made easy

FCC Compliance Statement

This equipment has been tested and found to comply with the limits for a Class B digital device, pursuant to part 15 of the FCC Rules. These limits are designed to provide reasonable protection against harmful interference in a residential installation. This equipment generates, uses and can radiate radio frequency energy and, if not installed and used in accordance with the instructions, may cause harmful interference to radio communications. However, there is no guarantee that interference will not occur in a particular installation. If this equipment does cause harmful interference to radio or television reception, which can be determined by turning the equipment off and on, the user is encouraged to try to correct the interference by one or more of the following measures:

- Reorient or relocate the receiving antenna.
- Increase the separation between the equipment and receiver.
- Connect the equipment into an outlet on a circuit different from that to which the receiver is connected.
- Consult the dealer or an experienced radio/TV technician for help.

Use of Trademarks, Registered Trademarks, and other Protected Names and Symbols

This manual may make reference to trademarks, registered trademarks, and other protected names and/or symbols of third-party companies not related in any way to StarTech.com. Where they occur these references are for illustrative purposes only and do not represent an endorsement of a product or service by StarTech.com, or an endorsement of the product(s) to which this manual applies by the third-party company in question. Regardless of any direct acknowledgement elsewhere in the body of this document, StarTech.com hereby acknowledges that all trademarks, registered trademarks, service marks, and other protected names and/or symbols contained in this manual and related documents are the property of their respective holders.

Table of Contents

Introduction	1
Packaging Contents.....	1
System Requirements	1
ICUSB2321F View	2
ICUSB2322F View	2
Installation	3
Hardware Installation.....	3
Verifying Installation.....	4
Pinout	4
Specifications	5
Technical Support	6
Warranty Information	6

Introduction

This 1 or 2 Port USB to Serial RS232 Adapter Cable with COM Retention converts an available USB 1.1 or 2.0 port into an RS232 serial DB9 port to connect, monitor and control your serial devices.

This compact adapter features COM retention, allowing the same COM port value to automatically be re-assigned to the port if the device is disconnected and re-connected to the host computer, or if the system is rebooted.

Compatibility with a broad list of Operating Systems including Windows®, Windows® CE, Mac OS and Linux, makes this product easy to integrate into mixed environments.

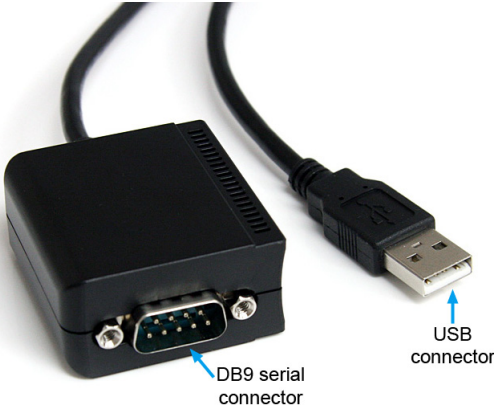
Packaging Contents

- 1 x USB to Serial Adapter
- 1 x Wall Mounting Bracket (ICUSB2322F only)
- 1 x Driver CD
- 1 x Instruction Manual

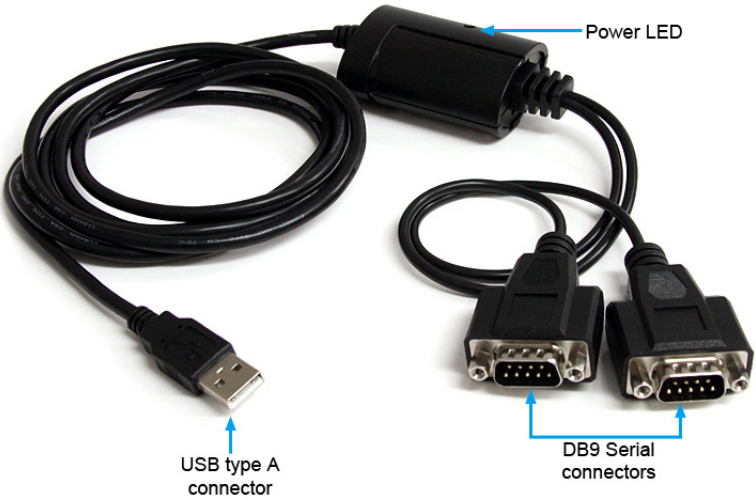
System Requirements

- USB enabled computer system with available USB port
- Microsoft® Windows® 2000/XP/Vista/Server 2003/Server 2008 R2/7 (32/64-bit), Windows CE 4.2 or later, or Apple® Mac OS® 9.x/10.x, or Linux®

ICUSB2321F View



ICUSB2322F View



*actual product may vary from photos

Installation

Hardware Installation

Windows 2000/XP/Server 2003

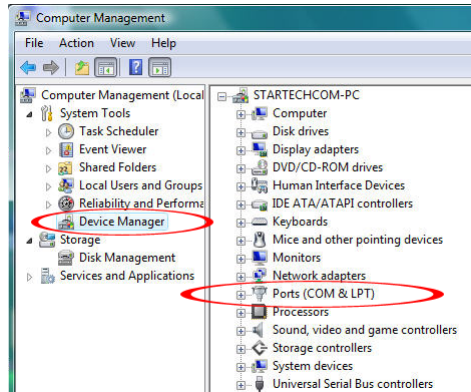
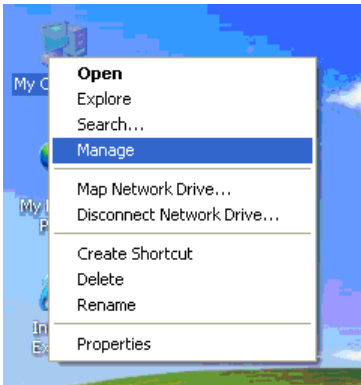
1. Plug the USB adapter into an available USB port on the computer.
2. When the Found New Hardware wizard appears on the screen, insert the Driver CD into your CD/DVD drive. If you are prompted to connect to Windows Update, please select the “No, not this time” option and click Next.
3. Select the option “Install Drivers Automatically (Recommended)” and then click the Next button.
4. Windows should now start searching for the drivers and install them automatically. Once this has completed, click the Finish button.
5. If Windows is unable to locate drivers, press the “Back” button or restart the wizard and select the advanced option to have it search the “USB_to_IO\FTDI” location on the CD.

Windows Vista/7/Server 2008 R2

1. Plug the USB adapter into an available USB port on the computer.
2. When the Found New Hardware window appears on the screen, click on the “Locate and install drivers software (recommended)” option. If prompted to search online, select the “Don’t search online” option.
3. When prompted to insert the disc, insert the Driver CD that came with the card, into your CD/DVD drive and Windows will automatically proceed to search the CD.
4. If a Windows Security dialog window appears, click the “Install this driver software anyway” option to proceed.
5. Once the driver is installed, click the Close button.
6. If Windows is unable to locate drivers, press the “Back” button or restart the wizard and select the option to “Browse the computer” and have it search the “USB_to_IO\FTDI” location on the CD.

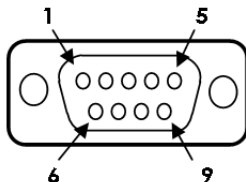
Verifying Installation

From the main desktop, right-click on “My Computer” (“Computer” in Vista/7), then select Manage. In the new Computer Management window, select Device Manager from the left window panel.



Double-click on the “Ports (COM & LPT)” option. Additional COM port(s) should be visible. The port is automatically sequentially numbered by Windows, but can be changed through the “Properties”. The port is ready to connect to new devices.

Pinout



<u>9 Pins</u>	<u>Signal</u>
1	DCD
2	RXD
3	TXD
4	DTR
5	GND
6	DSR
7	RTS
8	CTS
9	RI

Specifications

	ICUSB2321F	ICUSB2322F
Number of Ports	1	2
Host Interface	USB 2.0	
Chipset ID	FTDI FT232R	FTDI FT2232D
Connectors	1 x USB type A male 1 x 9-pin DB9 male	1 x USB type A male 2 x 9-pin DB9 male
LEDs	N/A	
Supported Protocols	RS232	
Data Bits	7, 8	
Stop Bits	1, 2	
Parity	None, Odd, Even, Mark, Space	
Maximum Data Transfer Rate	115.2 Kbps	921.6 Kbps
Operating Temperature	0°C ~ 55°C (32°F ~ 131°F)	
Storage Temperature	-20°C ~ 85°C (32°F ~ 185°F)	
Humidity	5 ~ 95% RH	
Cable Length	1.83m / 6ft	2.14m / 7ft
Dimensions	45.0mm x 41.5mm x 22.0mm	N/A
Weight	200g	300g
Compatible Operating Systems	Windows 2000/XP/Server 2003/Vista/Server 2008 R2/7 (32/64-bit), Windows CE 4.2+, Mac OS 9.x/10/x, Linux	

Technical Support

StarTech.com's lifetime technical support is an integral part of our commitment to provide industry-leading solutions. If you ever need help with your product, visit www.startech.com/support and access our comprehensive selection of online tools, documentation, and downloads.

Warranty Information

This product is backed by a one year warranty.

In addition, StarTech.com warrants its products against defects in materials and workmanship for the periods noted, following the initial date of purchase. During this period, the products may be returned for repair, or replacement with equivalent products at our discretion. The warranty covers parts and labor costs only. StarTech.com does not warrant its products from defects or damages arising from misuse, abuse, alteration, or normal wear and tear.

Limitation of Liability

In no event shall the liability of StarTech.com Ltd. and StarTech.com USA LLP (or their officers, directors, employees or agents) for any damages (whether direct or indirect, special, punitive, incidental, consequential, or otherwise), loss of profits, loss of business, or any pecuniary loss, arising out of or related to the use of the product exceed the actual price paid for the product. Some states do not allow the exclusion or limitation of incidental or consequential damages. If such laws apply, the limitations or exclusions contained in this statement may not apply to you.

StarTech.com

Hard-to-find **made easy**

StarTech.com has been making “hard-to-find easy” since 1985, providing high quality solutions to a diverse IT and A/V customer base that spans many channels, including government, education and industrial facilities to name just a few. We offer an unmatched selection of computer parts, cables, A/V products, KVM and Server Management solutions, serving a worldwide market through our locations in the United States, Canada, the United Kingdom and Taiwan.

Visit **www.startech.com** today for complete information about all our products and to access exclusive interactive tools such as the Cable Finder, Parts Finder and the KVM Reference Guide.