

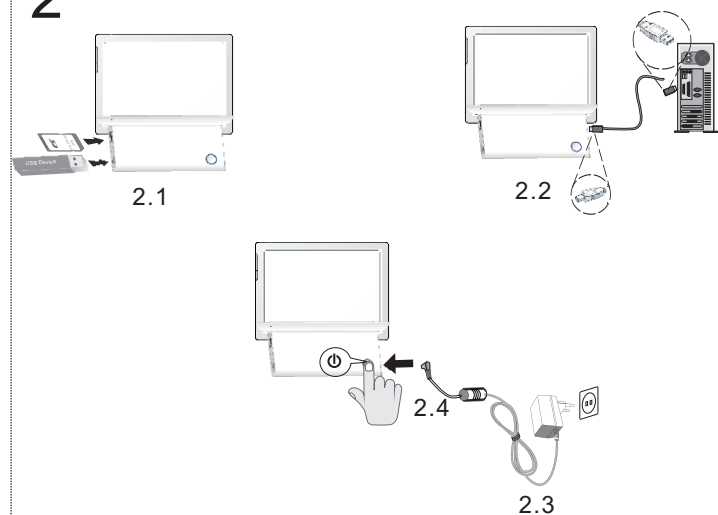
1



1 Packing Contents

- 1.1 Digital Photo Frame
- 1.2 Power Supply
- 1.3 Quick Guide

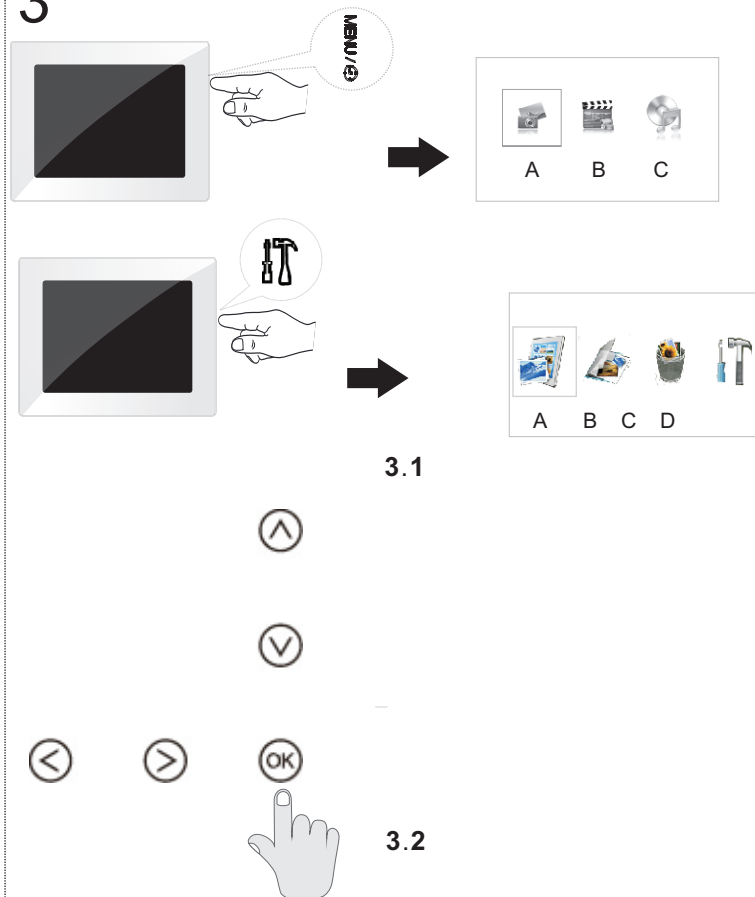
2



2 Getting Started

- 2.1 Insert a memory card (SD, MMC or MS) into the card slot. Insert the USB device into the USB port.
 ⚡ The card will only fit in one direction; do not force it. The card should fit snugly when properly inserted.
- 2.2 Connecting to a PC. Using the USB cable(not included), you can connect your frame to a computer to transfer files between the internal memory and computer.
 ⚡ If you connected the frame to a computer, the inserted memory card can not be recognized.
- 2.3 Plug AC adaptor into the Digital Photo Frame, and plug it into a wall outlet.
- 2.4 Press the POWER button on the rear of the device to power on.

3



3 Basic Operations

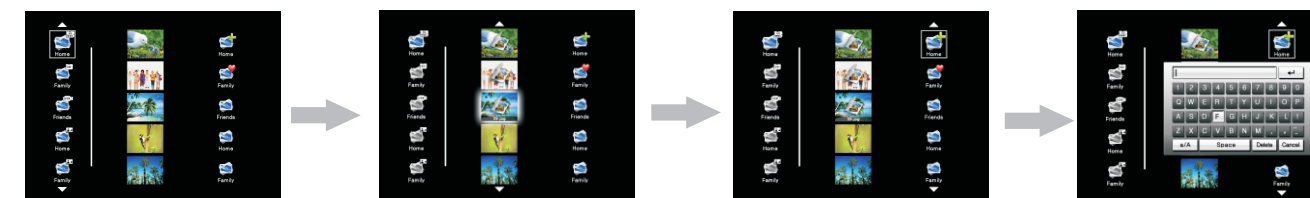
- 3.1 Press the MENU/OK button to enter the main menu.
 A: Photo Playback
 B: Video Playback
 C: Music Playback
 Press the OK button to enter the setting menu:
 A: Preview Mode
 B: Copy Menu
 C: Delete Menu
 D: Setting Mode
- 3.2 Use the direction key to select different item.
 ⏪ ⏩ 1. Direction Key
 2. Skips to previous or next image/video/music file.
 ⏴ ⏵ Enable music playing menu during slide show.
 ⏶ ⏷ 1. Direction Key
 2. Adjust the volume during audio playback.
 OK Start/Pause the playback.

Press the OK button during photo playback:



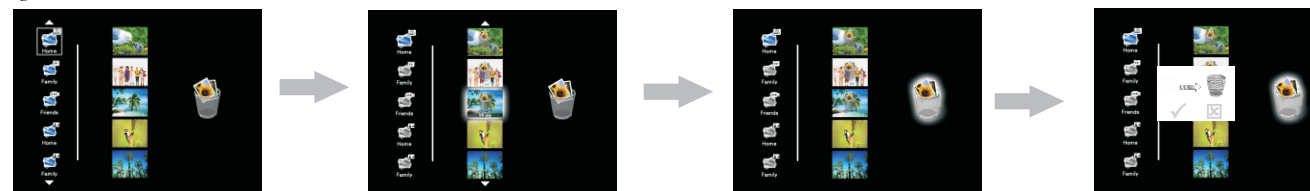
- 1. Use ⏴ or ⏵ button to select a folder/album on the left, then touch OK button.
- 2. Use ⏶ ⏷ ⏸ ⏹ button to select an image and touch OK to start the slideshow.
- 3. Skips to the previous or next image, use the ⏴ or ⏵ button. To pause or start the slide show, touch OK.
- 4. Touch the ⏴ button to enter the background music setting menu. Use ⏶ or ⏷ button to adjust the volume.

Photo Copy Menu



- 1. Use ⏴ or ⏵ button to select a source;
- 2. Select an image and touch OK.
- 3. Use ⏴ or ⏵ button to select a folder/album and touch OK to start copying.
- 4. If select [A-Z] and touch OK, you can rename the album. Use ⏴ ⏵ ⏶ ⏷ button to select a letter/digit and touch OK. After input all the letters/digits, select the Enter and touch OK to confirm.

Photo Delete Menu






















- 1. Use ⏴ or ⏵ button to select a source and;
- 2. Select an image and touch OK. Touch OK again to cancel the selections.
- 3. Touch OK button and then touch OK button.
- 4. Use ⏴ or ⏵ button to select ✓ to delete, select ✗ to cancel.

⚡ The same steps for music/video copy/delete.

Setting Mode

Icons in the setting mode:

	To set specific fun frame
	To choose the specific power start mode
	Power Start Up Mode-orderly 1
	Power Start Up Mode-orderly 2
	Power Start Up Mode-orderly 3
	Power Start Up Mode-orderly 4
	Power Start Up Mode-random 1
	Power Start Up Mode-random 2
	Power Start Up Mode-random 3
	Power Start Up Mode-random 4
	Eco Setting(Set the automatically power on/off time).
	Photo Setting(from the left to the right)
	1. Rotation
	2.To change the interval time for slide show.
	3.To choose different transition effect for slide show.
	4.To set different LCD screen display ratio.
	Adjustment of Brightness,Contrast,Color saturation,LCD backlight of the LCD screen.
	Brightness
	Contrast
	Color Saturation
	LCD Backlight
	Date Setting
	Time Setting
	Alarm Clock Setting
	Resert



Technical Data

Dimensions.....	203×162.5×88.1mm(AF5088MS)
.....	255×202×88.3mm (AF5108MS)
Screen size.....	8"(AF5088MS)
.....	10.4"(AF5108MS)
Aspect ratio.....	4:3
Resolution.....	800 x 600 pixel
Internal memory.....	2GB
USB port.....	USB-Host, USB Device
Compatible memory card.....	SD/MMC/MS/XD
Photo format.....	JPEG
Music format.....	MP3
Video format.....	MJPEG, Xvid, MPEG4-visual
File format.....	*.avi, *.mpg, *.mp3, *.jpg
Max. video resolution.....	720×576pixel,
.....	at 30 pictures/sec.(fps)

Safety instructions and recommendations

- Keep the screen clean (please use a dry soft cloth for cleaning). Make sure the power is off before cleaning the unit. Then
- In order to prevent damage to the card or the unit, please turn off the power before removing or inserting the card.
- Use enclosed DC 5V/2A power adapter, the unit is for indoor use only.
- Always handle the unit with care. Avoid touching the LCD screen.
- Never place heavy or sharp objects on the LCD panel, frame, or power cord.

- gently wipe with a dry soft cloth.
- Do not place the unit near any other heat sources.
- Do not splash or fill the unit with liquids.
- Do not place the unit to rain, water, moisture or high humidity.
- Temperature and humidity:
Operating temperature: 0C- + 45C, Humidity: 20%-80%
- This equipment complies with the voltage type specified on the unit.

The CE marking certifies that the product meets the main requirements of the European Parliament and Council directive 1999/5/CE on telecommunications terminal equipment, regarding safety and health of users, and

 regarding electromagnetic interference.

The declaration of compliance can be consulted on the site www.agfaphoto.com

Preservation of the environment as part of a sustainable development logic is an essential concern of AgfaPhoto. The desire of AgfaPhoto is to operate systems observing the environment and consequently it has decided to integrate environmental performances .

In the life cycle of this products, from manufacturing to commissioning use and elimination.

Packaging:

The presence of the logo (green dot) means that a contribution is paid to an approved national organisation to improve package recovery and recycling infrastructures to facilitate. please respect the sorting rules set up locally for this kind of waste.

Product:

The crossed-out waste bin stuck on the product means that the product belongs to the family of electrical and electronic equipment. In this respect, the European regulations ask you to dispose of it selectively;

At sales points in the event of the purchase of similar equipment.

At the collection points made available to you local-ly(drop-off centre, selective collection, etc.).

In this way you can participate in the re-use and upgrading of Electrical and Electronic Equipment Waste, which can have an effect on the environment and human health.

AgfaPhoto Holding GmbH:AGFAPHOTO is used under license of Agfa-Gevaert NV & Co.KG Agfa-Gevaert NV & Co.KG does not manufacture these products or provide any product warranty or support.Contact:www.agfaphoto.com

For service, support and warranty information, contact the distributor or manufacturer.