

TOSHIBA
Leading Innovation >>>

STOR **E** art

External Hard Disk Drive



> **STYLISH DATA PROTECTION**

Choose your storage model for your individual needs (from 250 GB up to 640 GB)

> **ULTIMATE PC PROTECTION**

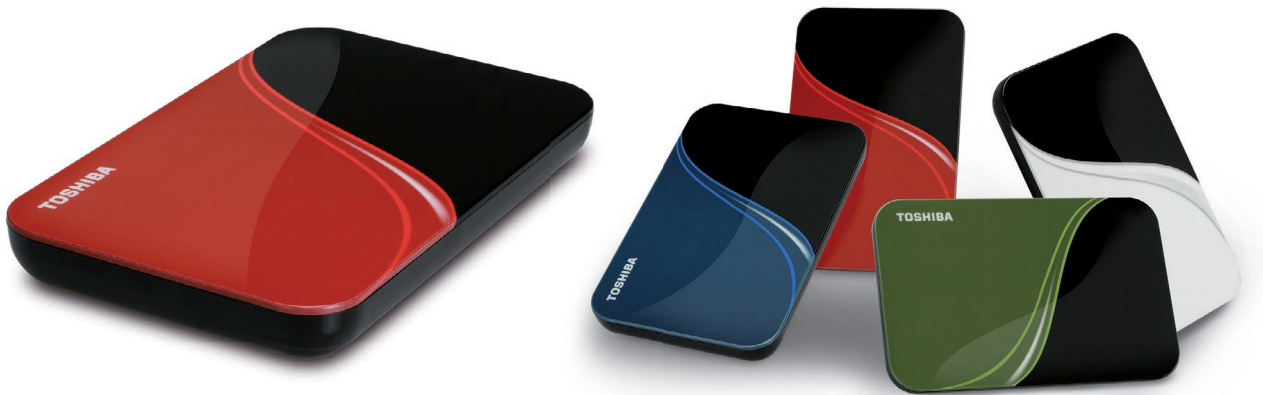
Preloaded with Award winning McAfee security (trial version) and NTI BackupNow EZ Software

> **MODERN INFORMATION PROTECTION**

Shock and Password Protection helps to secure your personal data

StorE – external storage solutions.





Main colour is red, the other colours are for project business. Please check details with your retailer.

> MAIN SPECIFICATION

Available capacities:	250 / 320 / 500 / 640 GB* <small>*Check Availability</small>
Key Specifications:	Low power consumption
USB Interface:	USB 2.0
Power (in):	5V, 1A max. powered by USB bus power
Dimensions (mm):	127 (L) x 81,3 (W) x 16,5 (H)
Weight (g):	Around 155 g* <small>* Depends on HDD model</small>
System requirements:	Microsoft® Windows® 2000 / XP / Vista®, USB 2.0 Port, CPU with 750 MHz or faster, 10 MB system hard disk space, 256 MB system memory
Box content:	Toshiba External Drive StorE art, USB 2.0 Cable, Multilingual Quick Start Guide, Mc Afee Internet Security 2009 (trial version preloaded), User Manual (pre-installed on the Hard Drive)
Certifications:	CE

> MAIN FEATURES

- Stylish personal storage range
- Smooth and comfortable to the touch: Sleek and glossy finish
- Scratch resistant plastic casing (IMD Technology)
- Small size saves desktop space and increases mobility
- No AC Adapter needed
- Plug & Play, ready to go out of the box
- Shock protection and ramp loading technology to protect your drive
- Simple solution for backup or increasing computer storage
- NTI BackupNow EZ Software
- Password Protection
- McAfee security (trial version)

WWW.TOSHIBA-MULTIMEDIA.COM

StorE art 2.5":
 HDDR250E04ER (250 GB)
 HDDR320E04ER (320 GB)
 HDDR500E04ER (500 GB)
 HDDR640E04ER (640 GB)

Dealer stamp: