



CA Protection Suites r3.1

Designed to meet the unique needs of small- and medium-sized businesses, CA Protection Suites provide cost-effective, easy-to-manage solutions that help ensure your IT assets are secure and available, enabling you to focus on running and growing your business. CA Protection Suites provide comprehensive data protection for your critical IT assets, combining security, backup and desktop migration capabilities into integrated solutions that help minimize risks, prevent downtime, and reduce IT management costs.

Key Features at a Glance

- Fully integrated solution that protects and secures your data stored on servers, desktops and laptops
- Proactive protection against today's most dangerous virus and spyware threats
- Comprehensive backup and restore
- Desktop migration and recovery

What's New

- Improved, fully integrated management reporting console
- Single dashboard view of your environment's data protection, by desktop
- Efficient installation and improved deployment process
- Real-time spyware protection
- Integrated anti-virus and anti-spyware functionality
- Optional anti-spam functionality
- Comprehensive technical documentation
- New add-on license capacity options
- Supports Windows Vista™ operating system (for desktops/laptops)

The IT Challenge for SMBs

Today's SMBs face multiple business and technology challenges. First, you must respond effectively to customers, increase your cash flow, adapt quickly to change, and grow your business – all with less time, budget, staff and resources. At the same time, you need to keep your critical IT assets as secure as possible, while making them readily available to users who can maximize their value. For a small business, one system going down could mean a whole day or more of lost productivity and sales.

In short, you are forced to build flexible yet cost-effective IT systems that are everything to everyone. Until now, you have not had the right tools to manage these challenges, resulting in higher costs, slower response times and an inability to achieve business objectives.

Total Data Protection for SMBs

CA Protection Suites helps you address these challenges with comprehensive data protection solutions that are designed right, priced right and sized right for SMBs. The suites combine CA's award-winning security, backup and desktop migration capabilities into fully integrated solutions that help minimize risks, prevent downtime and reduce IT management costs.

CA offers multiple suites that are so flexible that the component technology can work independently or together to address your unique business needs. The solutions include protection for desktops; servers; both desktops and servers; Microsoft Small Business Server Standard Edition; and Microsoft Small Business Server Premium Edition.

Leader in a Growing Market

CA, one of the world's largest IT management software companies, unifies and simplifies the management of IT for greater business results. Today, we serve 99% of the Fortune 1000® companies, as well as government organizations, educational institutions and thousands of other companies in diverse industries worldwide.

CA Protection Suites At-a-Glance

- **CA Desktop Protection Suite.** Protects data on users' desktops and laptops in a workgroup.
- **CA Server Protection Suite.** Protects centrally stored and managed data on your servers.
- **CA Business Protection Suite.** Protects data on desktops, laptops and servers.
- **CA Business Protection Suite for Microsoft Small Business Server Standard Edition.** Protects data for small businesses using Microsoft Small Business Server Standard Edition.
- **CA Business Protection Suite for Microsoft Small Business Server Premium Edition.** Protects data for businesses using Microsoft Small Business Server Premium Edition.

Distinctive Features and Functionalities

- **Multi-Layered Protection.** CA Protection Suites deliver multiple layers of protection – security, backup and desktop migration – in fully integrated solutions that help ensure your IT assets are secure and available.
- **Proactive Protection from Viruses and Spyware.** The suites provide

proactive protection against today's most dangerous threats including spyware, viruses, worms, Trojans and other malicious code to help secure confidential business information, reduce system downtime and improve PC and system performance. These powerful solutions also help eliminate the time and money spent dealing with virus and spyware outbreaks.

- **Round-the-Clock Monitoring of New Threats.** CA Protection Suites are backed by the CA Security Advisory Team, a worldwide network of rapid-response centers that are staffed 24x7x365 by a team of expert security researchers and certified support professionals who identify and automatically isolate the latest attacks – no matter where they appear on the network.

- **State of the Art Backup and Restore.** CA Protection Suites backup technology enables IT managers to easily backup and restore critical business information without disrupting user productivity and business activity.
- **Comprehensive Data Protection for Laptops and Desktops.** CA Protection Suites deliver transparent data protection to all your Windows-based laptops and desktops to ensure your business data is protected wherever it may be.
- **Efficient Desktop Migration.** The suites eliminate the need to manually input user settings, preferences and data on replaced and upgraded PCs. By automating this process, you can reduce the total cost of ownership for new PCs, increase technician productivity, decrease end-user downtime, reduce help desk calls and accelerate your return on investment.

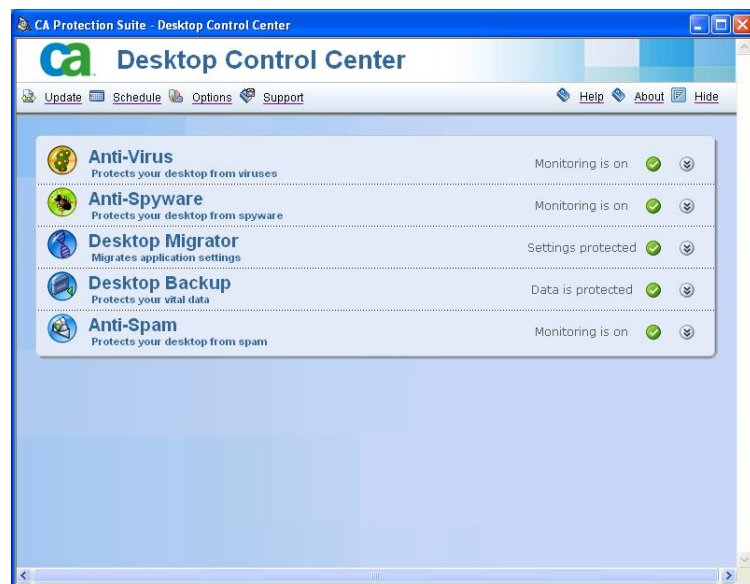


Figure 1.

CA Protection Suites provide an easy-to-use, desktop-based management reporting console that displays data in an intuitive, dashboard format, providing a complete view of your protection and assets.

- Simplified Management of Desktops and Servers.** CA Protection Suites provide an easy-to-use, web-based management reporting console that delivers a dashboard view of your data protection, by desktop, enabling you to make informed decisions and isolate problems. Specifically, the Desktop Control Center combines all desktop-side activity on one screen for easier administration of your protection technologies. (See Figure 1)

CA Protection Suites also provide a Server Control Center that presents a consolidated status of all protected desktops and servers on one screen. (See Figure 2) Powerful, yet flexible, the Server Control Center allows you to generate reports and launch the individual management reporting consoles for your anti-virus, anti-spyware, backup and restore protections to help you isolate the root-cause of problems quickly and effectively.

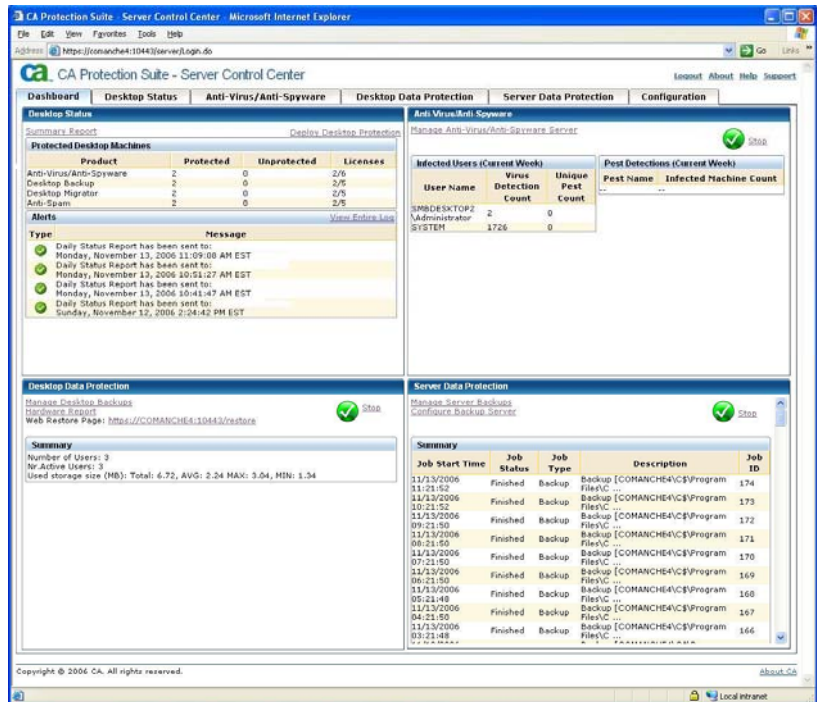


Figure 2. The enhanced Server Control Center monitors and reports the protection status of all the computers on your network. It also gives you the flexibility to deploy to unprotected computers directly from the dashboard.

- Powerful, Fully Integrated Management GUI.** Through an improved, fully integrated management reporting console you can monitor all the suite components within the network for simplified, streamlined administration. The management reporting console displays data in an intuitive, visual format, providing a complete view of your protection and assets. From this centralized reporting console, you can view the status of users, policies, updates, logs and reports to quickly respond to new events and effectively manage your protection throughout your organization.
- Improved Installation and Deployment Process.** The security, backup and desktop migration features are integrated on both the desktop and server components, making installation very simple and providing the ultimate out-of-the-box experience. Discovery and deployment of the software to

each desktop can be managed from the server. In addition, once the server is installed, the policies are set and automatically sent to the desktops/laptops, reducing configuration issues and improving policy compliance.

- Optional Anti-Spam Functionality.** As an optional feature, CA Protection Suites now offer award-winning desktop anti-spam technology to block unwanted email spam and fraudulent phishing attacks, giving you the flexibility to customize your security by including components that meet your individual business needs (sold separately).
- Comprehensive Technical Documentation.** CA Protection Suites provide both basic and advanced technical documentation to assist you whether you are performing a simple, out-of-the box installation or a customized installation that meets your

unique needs. In addition, online help tools are available to help answer any questions you may have about the product experience.

- Supports Desktops and Laptops Running Windows-Based Operating Systems.** CA Protection Suites support desktops and laptops running the 32-bit versions of Windows Vista™, Windows XP Home, Windows XP Professional and Windows 2000. By supporting a broad range of Windows-based operating systems, CA Protection Suites enable you to confidently upgrade or purchase new PCs knowing that your data will be protected.
- Support for Microsoft Small Business Server Standard and Premium Editions.** CA Protection Suites provide the critical backup and restore tools needed to protect a Microsoft Small Business Server environment. The solutions help

protect confidential application data, including Microsoft Exchange and Microsoft SQL server.

- **Integration with Microsoft SBS Server Management Console.** When your CA Protection Suite is installed, its Server Control Center is now easily accessible from the Microsoft SBS Server Management Console home page. The direct integration between these two applications helps improve efficiency while simplifying administration.
- **Packaged and Priced for SMBs.** CA Protection Suites combine security, backup and desktop migration in fully integrated solutions at a great value that delivers a convenient, simplified buying experience for you.
- **Scalable to Support Growing Business Needs.** CA Protection Suites basic package includes the capacity to support 5 computers. The suites make it easy to cost-effectively add-on license capacity in increments of 1, 5, 10, 20 and 50 users.

System Requirements

Server Requirements

Server Operating Systems Supported:

- Microsoft Windows 2000 SP4
- Microsoft Windows XP Professional SP2
- Microsoft Windows 2003 or R2
- Microsoft Windows Small Business Server Standard and Premium

Web Browser Requirements:

- Microsoft Internet Explorer 6.0.2900

Server Hardware Requirements:

- Pentium 4-class Processor
- 512 MB RAM (1GB Recommended)
- 2 GB Hard Disk Space (plus space for all remote backups)

Desktop/Laptop Requirements

Desktop/Laptop Operating Systems Supported:

- Microsoft Windows Vista™
- Microsoft Windows XP Home/Professional SP2
- Microsoft Windows 2000 SP4

Desktop/Laptop Hardware Requirements:

- Pentium 3-class Processor or Celeron
- 512 MB RAM
- 500 MB Hard Disk Space (plus space for local backup files)

For more information,
visit ca.com/smb

